



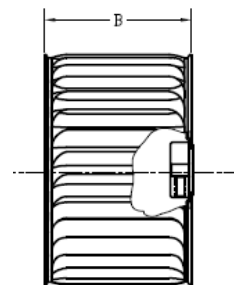
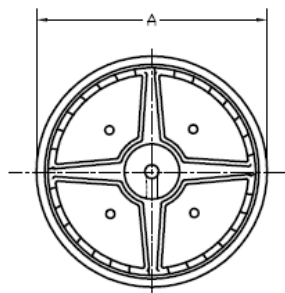
TECHNICAL SPECIFICATIONS

Centrifugal Strip Wheels Airotor AA Series

Single inlet – Forward curved

- Centrifugal strip wheel materials:
 - galvanized steel or
 - aluminum
- Wheels available in CW and CCW rotation
- Rotation determined by viewing wheel from the back side
- Wheels dimensions held to close tolerances
- Wheels are dynamically balanced according to industry standards
- Multiple hub bore sizes available.

Series AA			
Airotor model	A	B	Standard bores
AA-508-202	5.25	2.03	5/16, 3/8, 1/2
AA-508-216	5.25	2.47	5/16, 3/8, 1/2
AA-508-229	5.25	2.91	5/16, 3/8, 1/2
AA-508-316	5.25	3.44	5/16, 3/8, 1/2
AA-508-400	5.25	4.03	5/16, 3/8, 1/2
AA-524-202	5.75	2.03	5/16, 3/8, 1/2
AA-524-216	5.75	2.47	5/16, 3/8, 1/2
AA-524-229	5.75	2.91	5/16, 3/8, 1/2
AA-524-316	5.75	3.47	5/16, 3/8, 1/2
AA-524-400	5.75	4.03	5/16, 3/8, 1/2
AA-524-408	5.75	4.28	5/16, 3/8, 1/2
AA-610-202	6.28	2.06	5/16, 3/8, 1/2, 5/8
AA-610-216	6.28	2.49	5/16, 3/8, 1/2, 5/8
AA-610-228	6.28	2.92	5/16, 3/8, 1/2, 5/8
AA-610-314	6.28	3.46	5/16, 3/8, 1/2, 5/8
AA-610-325	6.28	3.80	5/16, 3/8, 1/2, 5/8
AA-610-400	6.28	4.03	5/16, 3/8, 1/2, 5/8
AA-610-408	6.28	4.28	5/16, 3/8, 1/2, 5/8



Single inlet
AA series