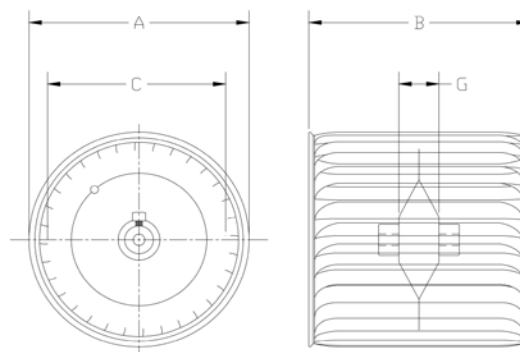


TECHNICAL SPECIFICATIONS

Belt Drive Centrifugal Wheels CL-916 Series

Double inlet – Forward curved

- Centrifugal wheel material - galvaneal (satin coat)
- Wheels equipped with two coaxial hubs
- Wheel OD concentric with bore within .060 T.I.R.
- Maximum wheel OD run out .060 T.I.R. axially
- Wheels are dynamically balanced within .075 oz.in.
- Standard hub bore 3/4". Other bore sizes available.
- Number of blades: 43



CL wheel

Model	Std. hub bore	Alt. bore sizes	Max RPM	Weight, lbs	Dim A	Dim B	Dim C	Dim G
CL 916-416-5	0.75	.875 / 1	1800	3.00	9.50	4.50	7.75	1.88
CL 916-600-5	0.75	.875 / 1	1800	3.50	9.50	6.00	7.75	1.88
CL 916-704-5	0.75	.875 / 1	1800	3.75	9.50	7.13	7.75	1.88
CL 916-800-5	0.75	.875 / 1	1800	4.50	9.50	8.00	7.75	1.88
CL 916-916-5	0.75	.875 / 1	1800	5.00	9.50	9.50	7.75	1.88