

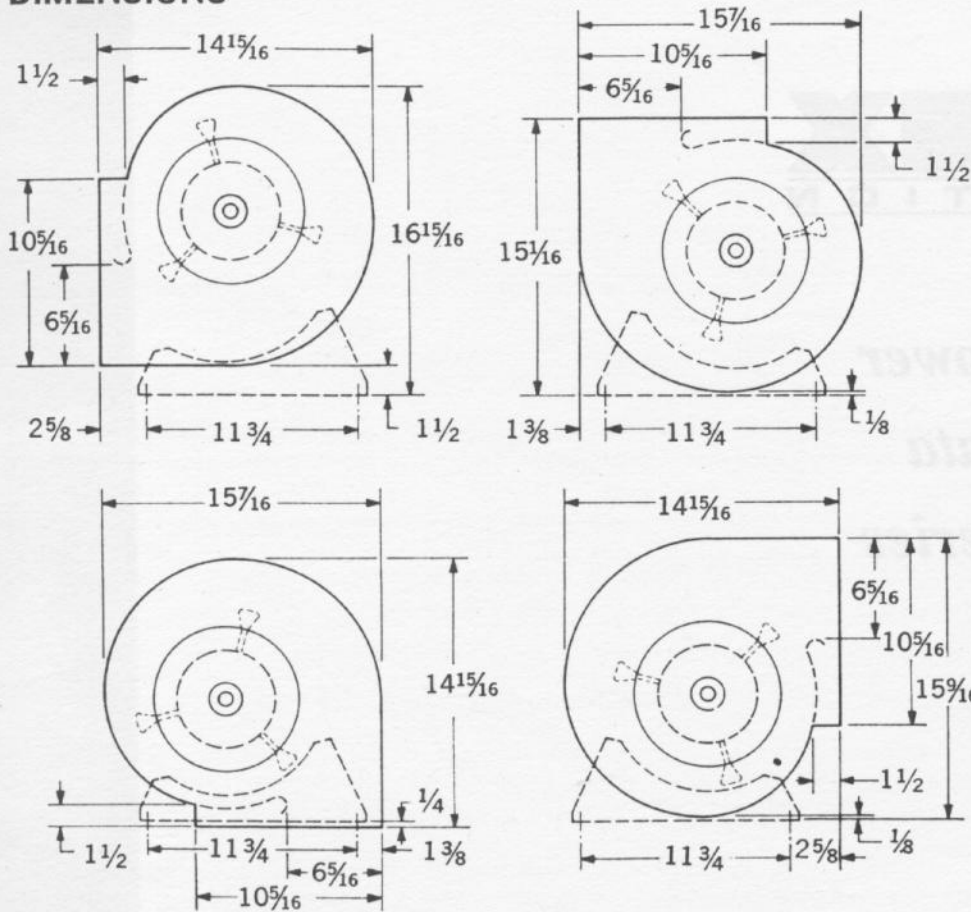


Direct Drive Blower *Dimensional Data* *DC and DCT Series*

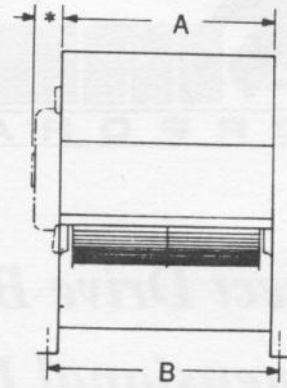
DC 100-10-2	10.0"	10.0"
DC 100-10-4	10.0"	10.0"
DC 100-10-6	10.0"	10.0"
DC 100-10-8	10.0"	10.0"

DC 100-10-2	10.0"	10.0"
DC 100-10-4	10.0"	10.0"
DC 100-10-6	10.0"	10.0"
DC 100-10-8	10.0"	10.0"
DC 100-10-10	10.0"	10.0"
DC 100-10-12	10.0"	10.0"

DIMENSIONS



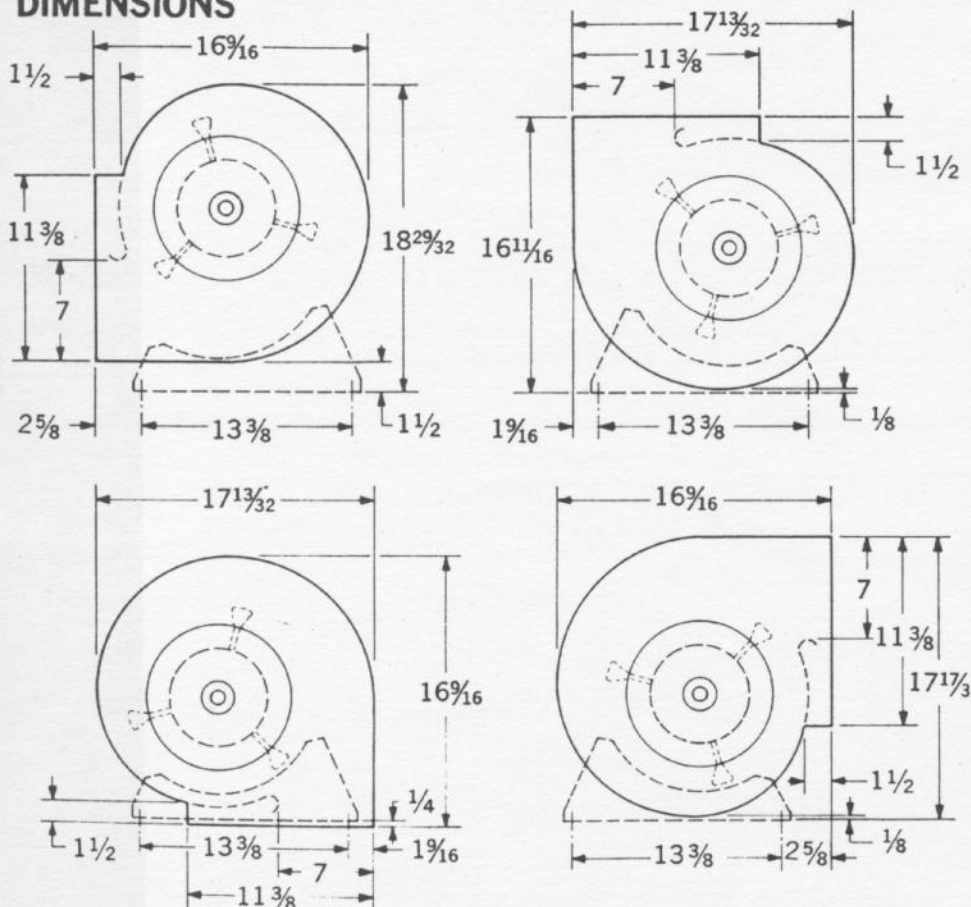
SERIES DC 9



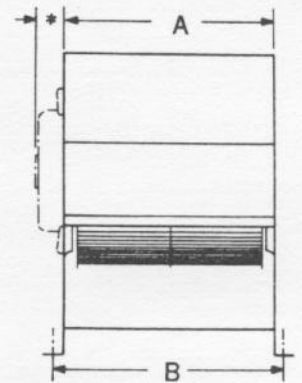
	A	B
DC 916-416-5	6 13/16	7 13/16
DC 916-600-5	8 1/4	9 1/4
DC 916-704-5	9 3/16	10 3/16
DC 916-800-5	10 1/2	11 1/2
DC 916-916-5	11 13/16	12 13/16

*VARIES WITH MOTOR LENGTH

DIMENSIONS



SERIES DC 10

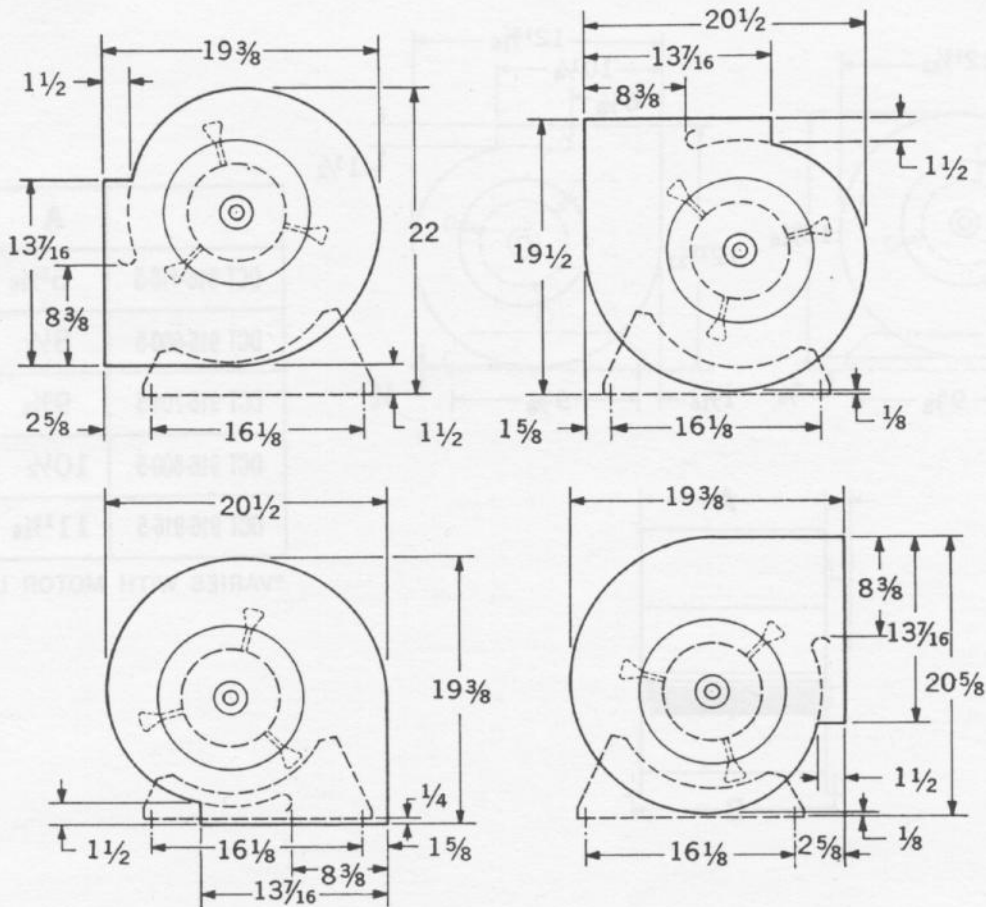


	A	B
DC 1020-416-5	6 13/16	7 13/16
DC 1020-600-5	8 1/4	9 1/4
DC 1020-704-5	9 11/16	10 11/16
DC 1020-800-5	10 1/2	11 1/2
DC 1020-916-5	12 1/4	13 1/4
DC 1020-1020-5	13 3/8	14 3/8

*VARIES WITH MOTOR LENGTH

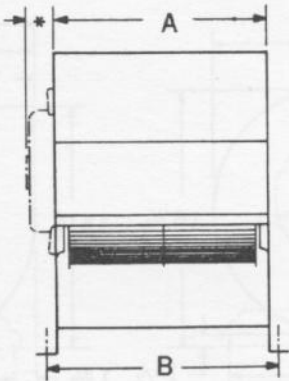
DIMENSIONS

SERIES DC 12



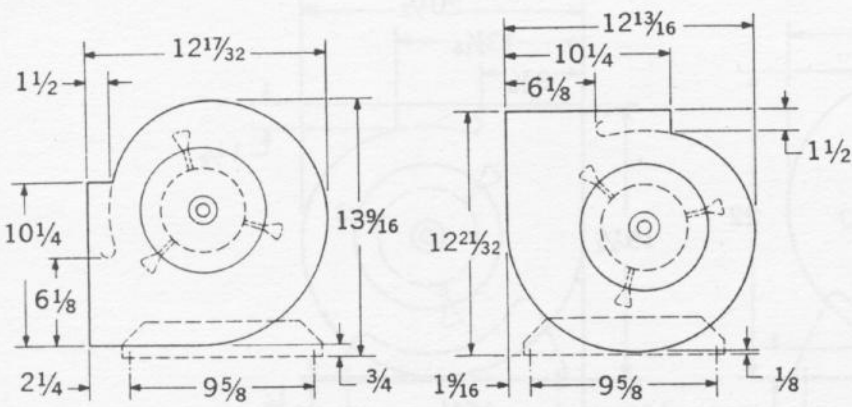
	A	B
DC 1220-600-5	8 ¹³ / ₁₆	9 ¹³ / ₁₆
DC 1220-704-5	9 ¹¹ / ₁₆	10 ¹¹ / ₁₆
DC 1220-800-5	10 ³ / ₄	11 ³ / ₄
DC 1220-916-5	12 ¹ / ₄	13 ¹ / ₄
DC 1220-1104-5	14 ¹¹ / ₁₆	15 ¹¹ / ₁₆
DC 1220-1220-5	15 ⁵ / ₈	16 ⁵ / ₈

*VARIES WITH MOTOR LENGTH



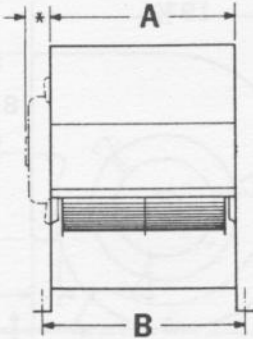
DIMENSIONS

SERIES DCT 9



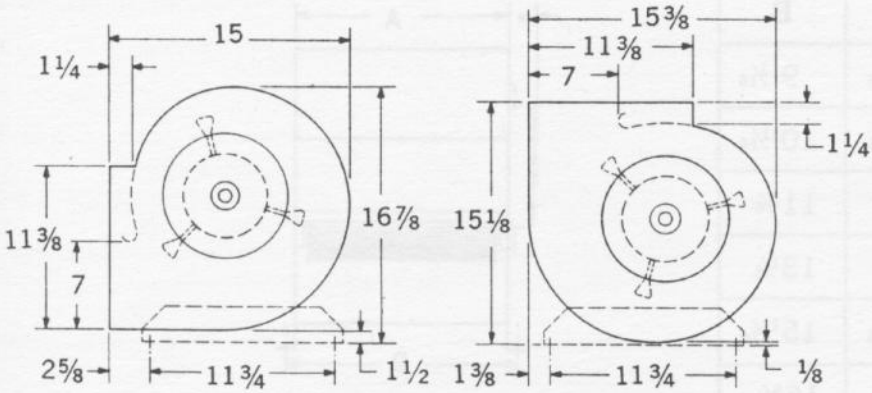
	A	B
DCT 916-416-5	$6\frac{13}{16}$	$7\frac{13}{16}$
DCT 916-600-5	$8\frac{1}{4}$	$9\frac{1}{4}$
DCT 916-704-5	$9\frac{9}{16}$	$10\frac{3}{16}$
DCT 916-800-5	$10\frac{1}{2}$	$11\frac{1}{2}$
DCT 916-916-5	$11\frac{13}{16}$	$12\frac{13}{16}$

*VARIES WITH MOTOR LENGTH



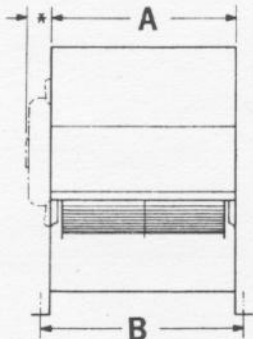
DIMENSIONS

SERIES DCT 10



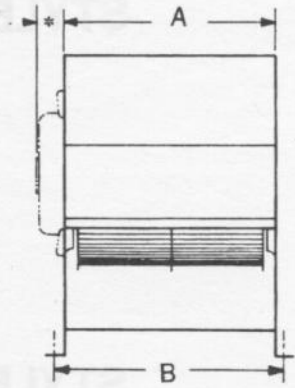
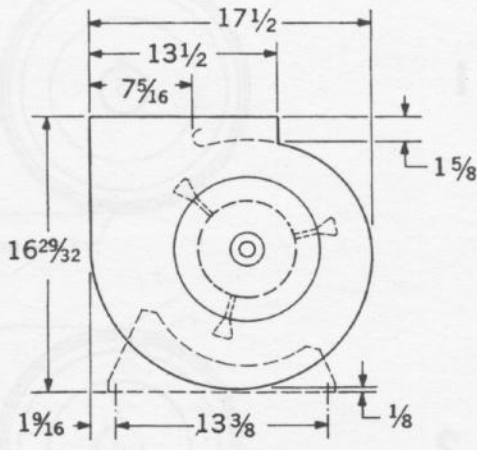
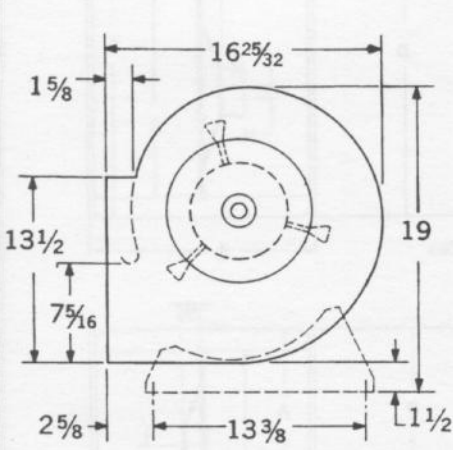
	A	B
DCT 1020-416-5	$6\frac{13}{16}$	$7\frac{13}{16}$
DCT 1020-600-5	$8\frac{1}{4}$	$9\frac{1}{4}$
DCT 1020-704-5	$9\frac{11}{16}$	$10\frac{11}{16}$
DCT 1020-800-5	$10\frac{1}{2}$	$11\frac{1}{2}$
DCT 1020-916-5	$11\frac{13}{16}$	$12\frac{13}{16}$
DCT 1020-1020-5	$13\frac{3}{8}$	$14\frac{3}{8}$

*VARIES WITH MOTOR LENGTH



DIMENSIONS

SERIES DCT 12

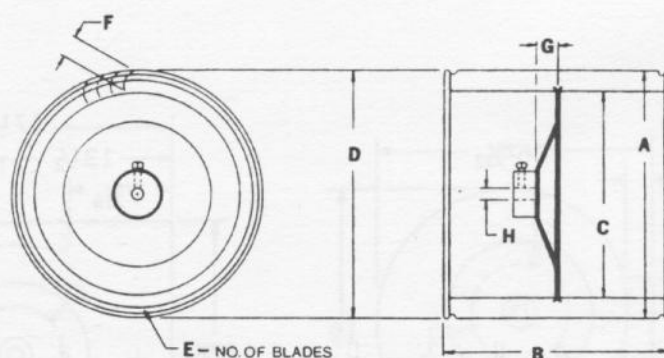


	A	B
DCT 1220-600-5	$8\frac{1}{16}$	$9\frac{1}{16}$
DCT 1220-704-5	$9\frac{1}{16}$	$10\frac{1}{16}$
DCT 1220-800-5	$10\frac{3}{4}$	$11\frac{3}{4}$
DCT 1220-916-5	$12\frac{1}{4}$	$13\frac{1}{4}$
DCT 1220-1104-5	$13\frac{7}{8}$	$14\frac{7}{8}$
DCT 1220-1220-5	$15\frac{5}{8}$	$16\frac{5}{8}$

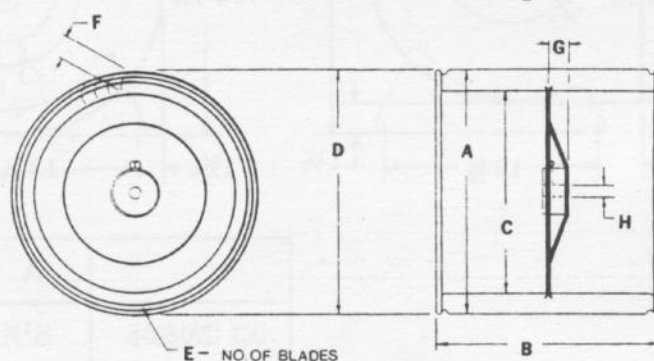
*VARIES WITH MOTOR LENGTH

DIRECT DRIVE WHEEL DIMENSIONS

STYLE 1

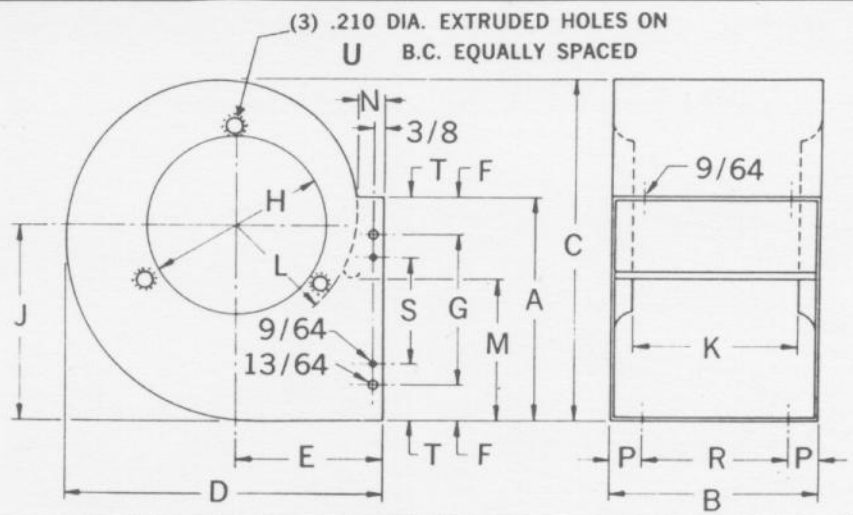


STYLE 2



WHEEL PART NUMBER	ST'D STYLE NO.	BLOWER MODEL	A	B	C	D	E	F	G	H	WHEEL WT. LBS.	MAX. SPEED
CM 916- 416-5	1	DC & DCT 916- 416-5	9½	4½	7¾	9½	43	1	1⅝	½	2¾	1600
CM 916- 600-5	1	DC & DCT 916- 600-5	9½	6	7¾	9½	43	1	1⅝	½	4	1600
CM 916- 704-5	1	DC & DCT 916- 704-5	9½	7⅛	7¾	9½	43	1	1⅝	½	4¼	1600
CM 916- 800-5	1	DC & DCT 916- 800-5	9½	8	7¾	9½	43	1	1⅝	½	4½	1600
CM 916- 916-5	2	DC & DCT 916- 916-5	9½	9½	7¾	9½	43	1	1⅝	½	5¼	1600
CM 1020- 416-5	1	DC & DCT 1020- 416-5	10⅝	4½	8⅞	10⅝	48	1	1⅞	½	4	1600
CM 1020- 600-5	1	DC & DCT 1020- 600-5	10⅝	6	8⅞	10⅝	48	1	1⅞	½	4¾	1600
CM 1020- 704-5	1	DC & DCT 1020- 704-5	10⅝	7⅛	8⅞	10⅝	48	1	1⅞	½	5¼	1600
CM 1020- 800-5	1	DC & DCT 1020- 800-5	10⅝	8	8⅞	10⅝	48	1	1⅞	½	5½	1600
CM 1020- 916-5	2	DC & DCT 1020- 916-5	10⅝	9½	8⅞	10⅝	48	1	1⅞	½	6	1600
CM 1020-1020-5	2	DC & DCT 1020-1020-5	10⅝	10⅝	8⅞	10⅝	48	1	1⅞	½	6½	1600
CM 1220- 600-5	1	DC & DCT 1220- 600-5	12⅝	6	10⅜	12⅝	43	1⅜	1⅜	½	6	1200
CM 1220- 704-5	1	DC & DCT 1220- 704-5	12⅝	7	10⅜	12⅝	43	1⅜	1⅜	½	6¼	1200
CM 1220- 800-5	1	DC & DCT 1220- 800-5	12⅝	8	10⅜	12⅝	43	1⅜	1⅜	½	6¾	1200
CM 1220- 916-5	1	DC & DCT 1220- 916-5	12⅝	9½	10⅜	12⅝	43	1⅜	1⅜	½	7	1200
CM 1220-1104-5	2	DC & DCT 1220-1104-5	12⅝	11⅛	10⅜	12⅝	43	1⅜	1⅜	½	9¼	1200
CM 1220-1220-5	2	DC & DCT 1220-1220-5	12⅝	12⅝	10⅜	12⅝	43	1⅜	1⅜	½	9¾	1200

DC-DCT HOUSING DIMENSIONS



Blower Model	A	B	C	D	E	F	G	H	J	K	L	M	N	P	R	S	T	U
DC 916-416-5	10 ⁵ / ₁₆	6 ¹³ / ₁₆	15 ⁷ / ₁₆	14 ¹⁵ / ₁₆	7 ³ / ₁₆	1 ⁹ / ₃₂	7 ³ / ₄	7 ¹³ / ₁₆	8 ³ / ₈	5	5 ¹ / ₂	6 ⁵ / ₁₆	1 ¹ / ₂	---	---	6 ¹ / ₄	2 ¹ / ₃₂	9 ⁹ / ₈
DC 916-600-5	10 ⁵ / ₁₆	8 ¹ / ₄	15 ⁷ / ₁₆	14 ¹⁵ / ₁₆	7 ³ / ₁₆	1 ⁹ / ₃₂	7 ³ / ₄	7 ¹³ / ₁₆	8 ³ / ₈	6 ⁷ / ₁₆	5 ¹ / ₂	6 ⁵ / ₁₆	1 ¹ / ₂	1 ⁹ / ₃₂	5 ¹¹ / ₁₆	6 ¹ / ₄	2 ¹ / ₃₂	9 ⁹ / ₈
DC 916-704-5	10 ⁵ / ₁₆	9 ³ / ₁₆	15 ⁷ / ₁₆	14 ¹⁵ / ₁₆	7 ³ / ₁₆	1 ⁹ / ₃₂	7 ³ / ₄	7 ¹³ / ₁₆	8 ³ / ₈	7 ³ / ₈	5 ¹ / ₂	6 ⁵ / ₁₆	1 ¹ / ₂	2	5 ³ / ₁₆	6 ¹ / ₄	2 ¹ / ₃₂	9 ⁹ / ₈
DC 916-800-5	10 ⁵ / ₁₆	10 ¹ / ₂	15 ⁷ / ₁₆	14 ¹⁵ / ₁₆	7 ³ / ₁₆	1 ⁹ / ₃₂	7 ³ / ₄	7 ¹³ / ₁₆	8 ³ / ₈	8 ¹¹ / ₁₆	5 ¹ / ₂	6 ⁵ / ₁₆	1 ¹ / ₂	2 ¹ / ₁₆	6 ³ / ₈	6 ¹ / ₄	2 ¹ / ₃₂	9 ⁹ / ₈
DC 916-916-5	10 ⁵ / ₁₆	11 ¹³ / ₁₆	15 ⁷ / ₁₆	14 ¹⁵ / ₁₆	7 ³ / ₁₆	1 ⁹ / ₃₂	7 ³ / ₄	7 ¹³ / ₁₆	8 ³ / ₈	10	5 ¹ / ₂	6 ⁵ / ₁₆	1 ¹ / ₂	2	7 ¹³ / ₁₆	6 ¹ / ₄	2 ¹ / ₃₂	9 ⁹ / ₈
DC 1020-416-5	11 ³ / ₈	6 ¹³ / ₁₆	17 ¹³ / ₃₂	16 ⁹ / ₁₆	7 ¹⁵ / ₁₆	1 ¹ / ₄	8 ³ / ₈	8 ¹³ / ₁₆	9 ⁹ / ₈	4 ¹³ / ₁₆	6 ³ / ₁₆	7	1 ¹ / ₂	---	---	6 ³ / ₈	2 ¹ / ₂	10 ³ / ₁₆
DC 1020-600-5	11 ³ / ₈	8 ¹ / ₄	17 ¹³ / ₃₂	16 ⁹ / ₁₆	7 ¹⁵ / ₁₆	1 ¹ / ₄	8 ³ / ₈	8 ¹³ / ₁₆	9 ⁹ / ₈	6 ¹ / ₄	6 ³ / ₁₆	7	1 ¹ / ₂	1 ¹ / ₈	6	6 ³ / ₈	2 ¹ / ₂	10 ³ / ₁₆
DC 1020-704-5	11 ³ / ₈	9 ¹¹ / ₁₆	17 ¹³ / ₃₂	16 ⁹ / ₁₆	7 ¹⁵ / ₁₆	1 ¹ / ₄	8 ³ / ₈	8 ¹³ / ₁₆	9 ⁹ / ₈	7 ¹¹ / ₁₆	6 ³ / ₁₆	7	1 ¹ / ₂	2 ¹ / ₄	5 ³ / ₁₆	6 ³ / ₈	2 ¹ / ₂	10 ³ / ₁₆
DC 1020-800-5	11 ³ / ₈	10 ¹ / ₂	17 ¹³ / ₃₂	16 ⁹ / ₁₆	7 ¹⁵ / ₁₆	1 ¹ / ₄	8 ³ / ₈	8 ¹³ / ₁₆	9 ⁹ / ₈	8 ¹ / ₂	6 ³ / ₁₆	7	1 ¹ / ₂	2 ¹ / ₄	6	6 ³ / ₈	2 ¹ / ₂	10 ³ / ₁₆
DC 1020-916-5	11 ³ / ₈	12 ¹ / ₄	17 ¹³ / ₃₂	16 ⁹ / ₁₆	7 ¹⁵ / ₁₆	1 ¹ / ₄	8 ³ / ₈	8 ¹³ / ₁₆	9 ⁹ / ₈	10 ¹ / ₄	6 ³ / ₁₆	7	1 ¹ / ₂	2 ¹ / ₃₂	7 ¹³ / ₁₆	6 ³ / ₈	2 ¹ / ₂	10 ³ / ₁₆
DC 1020-1020-5	11 ³ / ₈	13 ¹ / ₈	17 ¹³ / ₃₂	16 ⁹ / ₁₆	7 ¹⁵ / ₁₆	1 ¹ / ₄	8 ³ / ₈	8 ¹³ / ₁₆	9 ⁹ / ₈	11 ¹ / ₈	6 ³ / ₁₆	7	1 ¹ / ₂	3 ¹ / ₄	6 ⁵ / ₈	6 ³ / ₈	2 ¹ / ₂	10 ³ / ₁₆
DC 1220-600-5	13 ⁷ / ₁₆	8 ¹³ / ₁₆	20 ¹ / ₂	19 ³ / ₈	9 ⁹ / ₈	1 ⁷ / ₃₂	11	10 ³ / ₈	11 ¹⁵ / ₃₂	6 ⁹ / ₁₆	7 ⁵ / ₁₆	8 ³ / ₈	1 ¹ / ₂	---	---	7	3 ⁷ / ₃₂	11 ¹¹ / ₁₆
DC 1220-704-5	13 ⁷ / ₁₆	9 ¹¹ / ₁₆	20 ¹ / ₂	19 ³ / ₈	9 ⁹ / ₈	1 ⁷ / ₃₂	11	10 ³ / ₈	11 ¹⁵ / ₃₂	7 ⁷ / ₁₆	7 ⁵ / ₁₆	8 ³ / ₈	1 ¹ / ₂	2 ¹ / ₄	5 ³ / ₁₆	7	3 ⁷ / ₃₂	11 ¹¹ / ₁₆
DC 1220-800-5	13 ⁷ / ₁₆	10 ³ / ₄	20 ¹ / ₂	19 ³ / ₈	9 ⁹ / ₈	1 ⁷ / ₃₂	11	10 ³ / ₈	11 ¹⁵ / ₃₂	8 ¹ / ₂	7 ⁵ / ₁₆	8 ³ / ₈	1 ¹ / ₂	---	---	7	3 ⁷ / ₃₂	11 ¹¹ / ₁₆
DC 1220-916-5	13 ⁷ / ₁₆	12 ¹ / ₄	20 ¹ / ₂	19 ³ / ₈	9 ⁹ / ₈	1 ⁷ / ₃₂	11	10 ³ / ₈	11 ¹⁵ / ₃₂	10	7 ⁵ / ₁₆	8 ³ / ₈	1 ¹ / ₂	2 ¹ / ₄	7 ³ / ₄	7	3 ⁷ / ₃₂	11 ¹¹ / ₁₆
DC 1220-1104-5	13 ⁷ / ₁₆	14 ¹¹ / ₁₆	20 ¹ / ₂	19 ³ / ₈	9 ⁹ / ₈	1 ⁷ / ₃₂	11	10 ³ / ₈	11 ¹⁵ / ₃₂	12 ⁷ / ₁₆	7 ⁵ / ₁₆	8 ³ / ₈	1 ¹ / ₂	3 ¹³ / ₁₆	7 ¹ / ₁₆	7	3 ⁷ / ₃₂	11 ¹¹ / ₁₆
DC 1220-1220-5	13 ⁷ / ₁₆	15 ⁵ / ₈	20 ¹ / ₂	19 ³ / ₈	9 ⁹ / ₈	1 ⁷ / ₃₂	11	10 ³ / ₈	11 ¹⁵ / ₃₂	13 ³ / ₈	7 ⁵ / ₁₆	8 ³ / ₈	1 ¹ / ₂	4 ⁵ / ₁₆	7	7	3 ⁷ / ₃₂	11 ¹¹ / ₁₆
DCT 916-416-5	10 ¹ / ₄	6 ¹³ / ₁₆	12 ¹³ / ₁₆	12 ¹⁷ / ₃₂	6 ¹ / ₈	1 ⁷ / ₃₂	7 ³ / ₄	7 ¹³ / ₁₆	7 ³ / ₁₆	5	5 ⁷ / ₃₂	6 ¹ / ₈	1 ¹ / ₂	---	---	---	---	9 ⁹ / ₈
DCT 916-600-5	10 ¹ / ₄	8 ¹ / ₄	12 ¹³ / ₁₆	12 ¹⁷ / ₃₂	6 ¹ / ₈	1 ⁷ / ₃₂	7 ³ / ₄	7 ¹³ / ₁₆	7 ³ / ₁₆	6 ⁷ / ₁₆	5 ⁷ / ₃₂	6 ¹ / ₈	1 ¹ / ₂	1 ⁹ / ₃₂	5 ¹¹ / ₁₆	---	---	9 ⁹ / ₈
DCT 916-704-5	10 ¹ / ₄	9 ³ / ₁₆	12 ¹³ / ₁₆	12 ¹⁷ / ₃₂	6 ¹ / ₈	1 ⁷ / ₃₂	7 ³ / ₄	7 ¹³ / ₁₆	7 ³ / ₁₆	7 ³ / ₈	5 ⁷ / ₃₂	6 ¹ / ₈	1 ¹ / ₂	2	5 ³ / ₁₆	---	---	9 ⁹ / ₈
DCT 916-800-5	10 ¹ / ₄	10 ¹ / ₂	12 ¹³ / ₁₆	12 ¹⁷ / ₃₂	6 ¹ / ₈	1 ⁷ / ₃₂	7 ³ / ₄	7 ¹³ / ₁₆	7 ³ / ₁₆	8 ¹¹ / ₁₆	5 ⁷ / ₃₂	6 ¹ / ₈	1 ¹ / ₂	2 ¹ / ₁₆	6 ³ / ₈	---	---	9 ⁹ / ₈
DCT 916-916-5	10 ¹ / ₄	11 ¹³ / ₁₆	12 ¹³ / ₁₆	12 ¹⁷ / ₃₂	6 ¹ / ₈	1 ⁷ / ₃₂	7 ³ / ₄	7 ¹³ / ₁₆	7 ³ / ₁₆	10	5 ⁷ / ₃₂	6 ¹ / ₈	1 ¹ / ₂	2	7 ¹³ / ₁₆	---	---	9 ⁹ / ₈
DCT 1020-416-5	11 ³ / ₈	6 ¹³ / ₁₆	15 ³ / ₈	15	7 ⁵ / ₁₆	1 ¹ / ₄	8 ³ / ₈	8 ¹³ / ₁₆	8 ²⁷ / ₃₂	4 ³ / ₄	6 ³ / ₈	7	1 ¹ / ₄	---	---	---	---	10 ³ / ₁₆
DCT 1020-600-5	11 ³ / ₈	8 ¹ / ₄	15 ³ / ₈	15	7 ⁵ / ₁₆	1 ¹ / ₄	8 ³ / ₈	8 ¹³ / ₁₆	8 ²⁷ / ₃₂	6 ³ / ₁₆	6 ³ / ₈	7	1 ¹ / ₄	1 ¹ / ₈	6	---	---	10 ³ / ₁₆
DCT 1020-704-5	11 ³ / ₈	9 ¹¹ / ₁₆	15 ³ / ₈	15	7 ⁵ / ₁₆	1 ¹ / ₄	8 ³ / ₈	8 ¹³ / ₁₆	8 ²⁷ / ₃₂	7 ³ / ₈	6 ³ / ₈	7	1 ¹ / ₄	2 ¹ / ₄	5 ³ / ₁₆	---	---	10 ³ / ₁₆
DCT 1020-800-5	11 ³ / ₈	10 ¹ / ₂	15 ³ / ₈	15	7 ⁵ / ₁₆	1 ¹ / ₄	8 ³ / ₈	8 ¹³ / ₁₆	8 ²⁷ / ₃₂	8 ⁷ / ₁₆	6 ³ / ₈	7	1 ¹ / ₄	2 ¹ / ₄	6	---	---	10 ³ / ₁₆
DCT 1020-916-5	11 ³ / ₈	11 ¹³ / ₁₆	15 ³ / ₈	15	7 ⁵ / ₁₆	1 ¹ / ₄	8 ³ / ₈	8 ¹³ / ₁₆	8 ²⁷ / ₃₂	9 ³ / ₄	6 ³ / ₈	7	1 ¹ / ₄	2 ¹ / ₃₂	7 ¹³ / ₁₆	---	---	10 ³ / ₁₆
DCT 1020-1020-5	11 ³ / ₈	13 ¹ / ₈	15 ³ / ₈	15	7 ⁵ / ₁₆	1 ¹ / ₄	8 ³ / ₈	8 ¹³ / ₁₆	8 ²⁷ / ₃₂	11 ¹ / ₁₆	6 ³ / ₈	7	1 ¹ / ₄	3 ¹ / ₄	6 ⁵ / ₈	---	---	10 ³ / ₁₆
DCT 1220-600-5	13 ¹ / ₂	8 ¹³ / ₁₆	17 ¹ / ₂	16 ²⁵ / ₃₂	8 ¹ / ₃₂	1 ¹ / ₄	11	10 ³ / ₈	10 ¹ / ₃₂	6 ¹ / ₂	7	7 ⁵ / ₁₆	1 ³ / ₈	---	---	---	---	11 ¹¹ / ₁₆
DCT 1220-704-5	13 ¹ / ₂	9 ¹¹ / ₁₆	17 ¹ / ₂	16 ²⁵ / ₃₂	8 ¹ / ₃₂	1 ¹ / ₄	11	10 ³ / ₈	10 ¹ / ₃₂	7 ³ / ₈	7	7 ⁵ / ₁₆	1 ³ / ₈	2 ¹ / ₄	5 ³ / ₁₆	---	---	11 ¹¹ / ₁₆
DCT 1220-800-5	13 ¹ / ₂	10 ³ / ₄	17 ¹ / ₂	16 ²⁵ / ₃₂	8 ¹ / ₃₂	1 ¹ / ₄	11	10 ³ / ₈	10 ¹ / ₃₂	8 ⁷ / ₁₆	7	7 ⁵ / ₁₆	1 ³ / ₈	---	---	---	---	11 ¹¹ / ₁₆
DCT 1220-916-5	13 ¹ / ₂	12 ¹ / ₄	17 ¹ / ₂	16 ²⁵ / ₃₂	8 ¹ / ₃₂	1 ¹ / ₄	11	10 ³ / ₈	10 ¹ / ₃₂	9 ⁵ / ₁₆	7	7 ⁵ / ₁₆	1 ³ / ₈	2 ¹ / ₄	7 ³ / ₄	---	---	11 ¹¹ / ₁₆
DCT 1220-1104-5	13 ¹ / ₂	13 ³ / ₈	17 ¹ / ₂	16 ²⁵ / ₃₂	8 ¹ / ₃₂	1 ¹ / ₄	11	10 ³ / ₈	10 ¹ / ₃₂	11 ⁹ / ₁₆	7	7 ⁵ / ₁₆	1 ³ / ₈	---	---	---	---	11 ¹¹ / ₁₆
DCT 1220-1220-5	13 ¹ / ₂	15 ⁵ / ₈	17 ¹ / ₂	16 ²⁵ / ₃₂	8 ¹ / ₃₂	1 ¹ / ₄	11	10 ³ / ₈	10 ¹ / ₃₂	13 ⁵ / ₁₆	7	7 ⁵ / ₁₆	1 ³ / ₈	4 ⁵ / ₁₆	7	---	---	11 ¹¹ / ₁₆