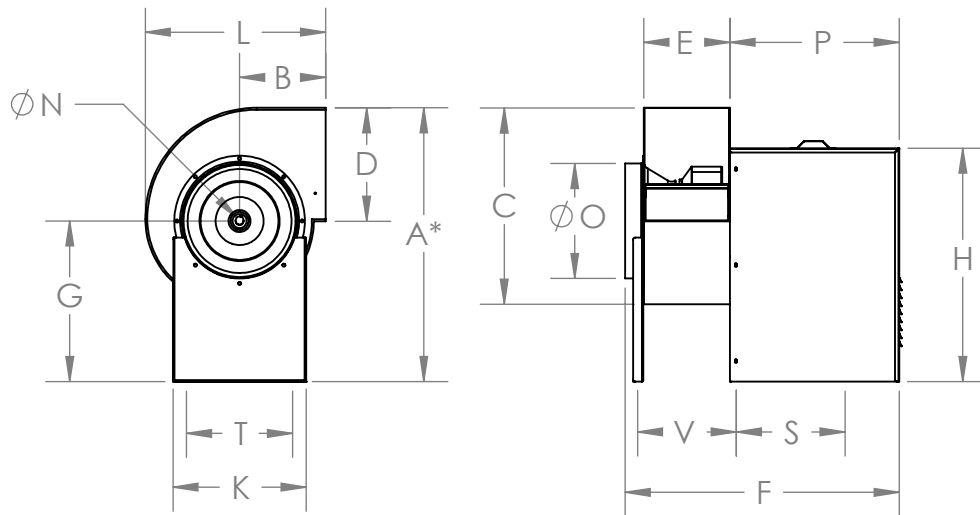
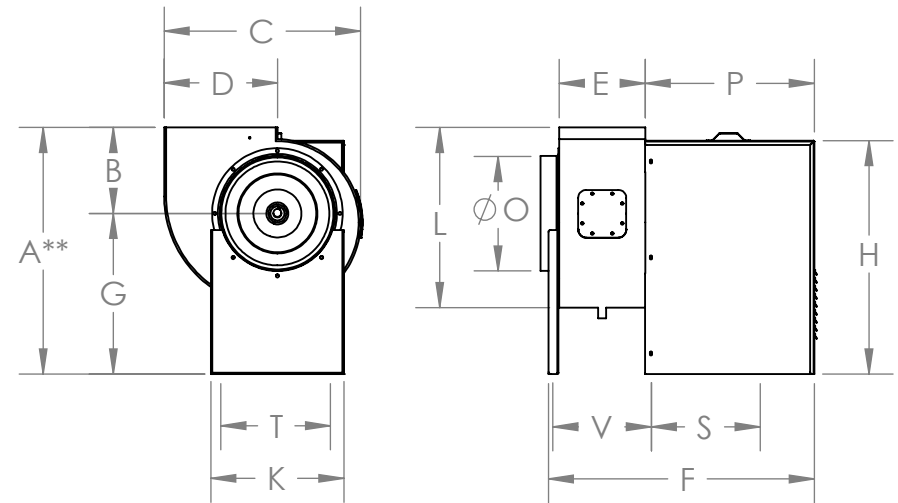


## BI Series



**Standard model**



**Restaurant model**

Model	A*	A**	B	C	D	E	F	G	H	K	L	N	O	P	S	T	V	Wt. (lbs)
BI-10	26-3/4	23-5/8	8-3/8	19	11-5/16	8-1/4	27-3/4	15-1/4	21-5/16	13-3/16	17-3/8	3/4	11	17-1/4	11-3/4	11-7/16	-	80
BI-12	33-1/16	30-1/16	10	22-1/4	13	9-7/8	33-1/4	20-1/16	29-1/8	16-9/16	20-1/2	1	12-7/16	21-1/8	11-1/2	14-11/16	13-1/8	114
BI-13	34-5/16	30-13/16	10-3/4	24-1/2	14-3/8	10-3/4	34-1/8	20-1/16	29-1/8	16-9/16	22-1/2	1	14-3/8	21-1/8	11-1/2	14-11/16	14	135
BI-15	35-13/16	31-13/16	11-3/4	27	15-3/4	12	35-3/8	20-1/16	29-1/8	16-9/16	24-11/16	1	15-7/8	21-1/8	11-1/2	14-11/16	15-1/4	142
BI-16	39-3/8	34-11/16	12-11/16	29-7/8	17-5/8	13-1/8	36-1/2	22	31	16-9/16	26-7/8	1-3/16	17-3/8	21-1/8	11-1/2	14-11/16	16-3/8	162
BI-18	41-1/4	35-13/16	13-13/16	33	19-3/8	14-1/2	37-7/8	22	31	16-9/16	29-5/8	1-3/16	19-3/8	21-1/8	11-1/2	14-11/16	17-3/4	173

Blower data							Motor data							Pulleys		Belt
Fan #	Qty	Model	Air flow (CFM)	SP	Power (HP)	RPM	Power (HP)	Frame size	Volts	Hz	PH	RPM	Blower	Motor	Length	
Airflow in:					Project:							AIRDEX CORPORATION, BARRIE, ONTARIO				
Static pressure in:					Contractor:							BI/BI-RM Series				
Velocity in:					Supplier:							Imperial submittal drawing				
Motor power in:					Engineer:							Date submitted:				