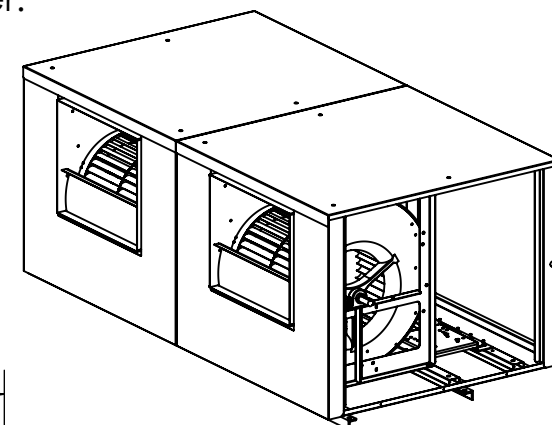
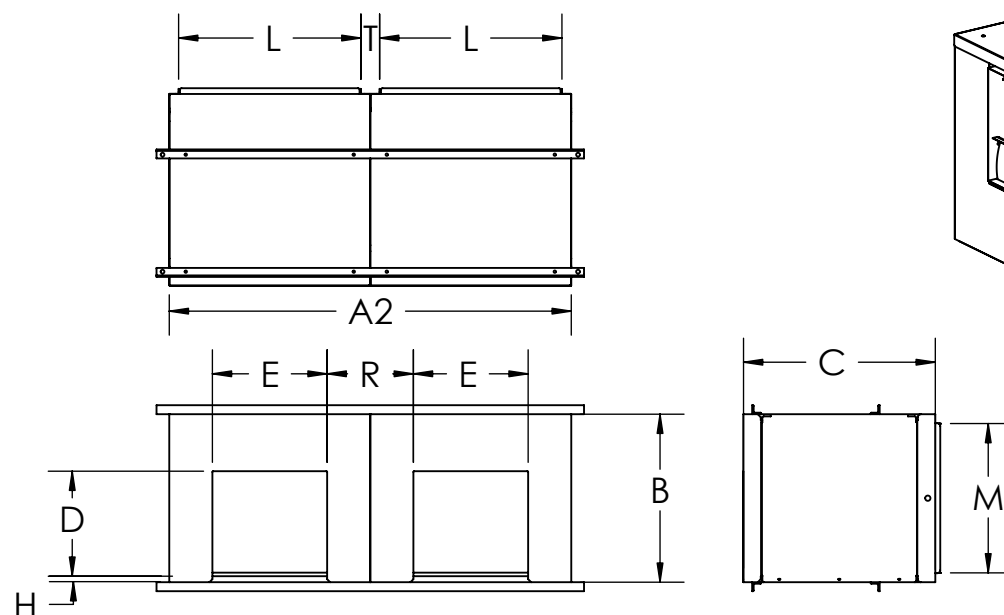




P.O. BOX 1207, 230 SAUNDERS RD.  
BARRIE, ONTARIO, L4M 5E2  
TEL:(705)739-8882 FAX:(705)739-8781

## Features:

- All purpose heavy duty blower with weather resistant insulated cabinet for indoor and outdoor instalation.
- Fiberglass insulation to reduce cabinet condensation and energy cost
- Large access panels for ease of instalation and service
- Pillow block bearings and reinforcing steel frame on all units
- Grey enamel finish on galvanized steel
- Filter section available separately
- Twin units are tied together with angle iron rails and driven by common shaft for balanced air supply by each blower.



Model DB-9218 shown.

BOM#	Model	A2	B	C	D	E	H	K	L	M	R	T
8887675	DB-9212-2	54	23	27-1/2	13-7/16	15-5/8	1	5/16	25	21	11-3/8	2
8887685	DB-9215-2	67	28	32	15-7/8	18-5/8	1	5/16	30-1/2	25	14-7/8	3
8887695	DB-9218-2	83	34	44	18-7/8	21-7/8	2	1/2	35-3/8	31-5/8	19-5/8	6.25

Fan #	Qty	Model	Air flow (CFM)	SP	Power (HP)	RPM	Power (HP)	Frame size	Volts	Hz	PH	RPM	Blower	Motor	Length
Airflow in:					Project:						AIRDEX CORPORATION, BARRIE, ONTARIO <b>9200-2 Series</b> Imperial submittal drawing				
Static pressure in:					Contractor:										
Velocity in:					Supplier:										
Motor power in:					Engineer:										
											Date submitted:				